



October Security Report



Patrol Hours

Tuesday – Saturday
12 p.m. – 8 p.m.

Boundaries

9700-11900 S. Halsted
11900 S. Halsted – 11900 S. State
11100 S. Emerald – 11100 S. Green
10300 S. Morgan – 10300 S. Lowe

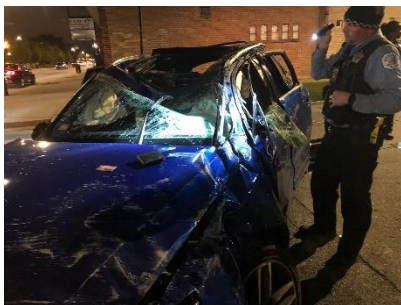
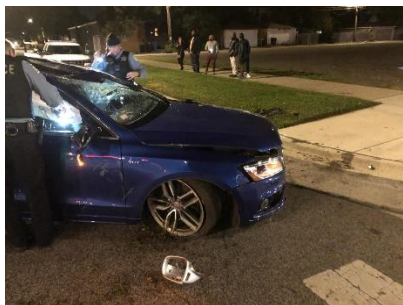
Dorian Johnson
SSA #45 Program Director
FSCDC
9923 S. Halsted Suite D
Chicago, IL 60628

Incident Reports

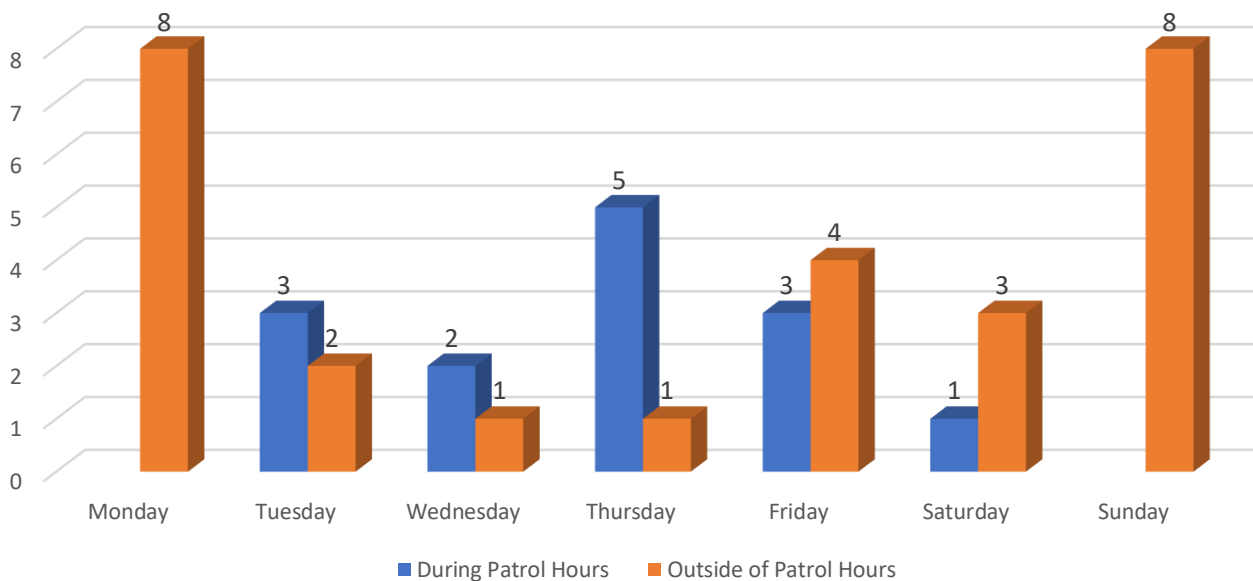
During the month of October, SSA 45 assisted CPD officers with the arrest of a suspect involved in the below crash.

A blue 4-door Audi sedan was stolen and crashed into a vehicle on 104th & Halsted. The vehicle fled the scene and crashed again on 102nd & Halsted.

Four African-American males ran from the vehicle toward 102nd & Emerald where one of them was caught and arrested. The vehicle (pictured below) they first crashed into was located on the median on 101st & Halsted.



Crime Comparison During Patrol Hours vs. Outside of Patrol Hours

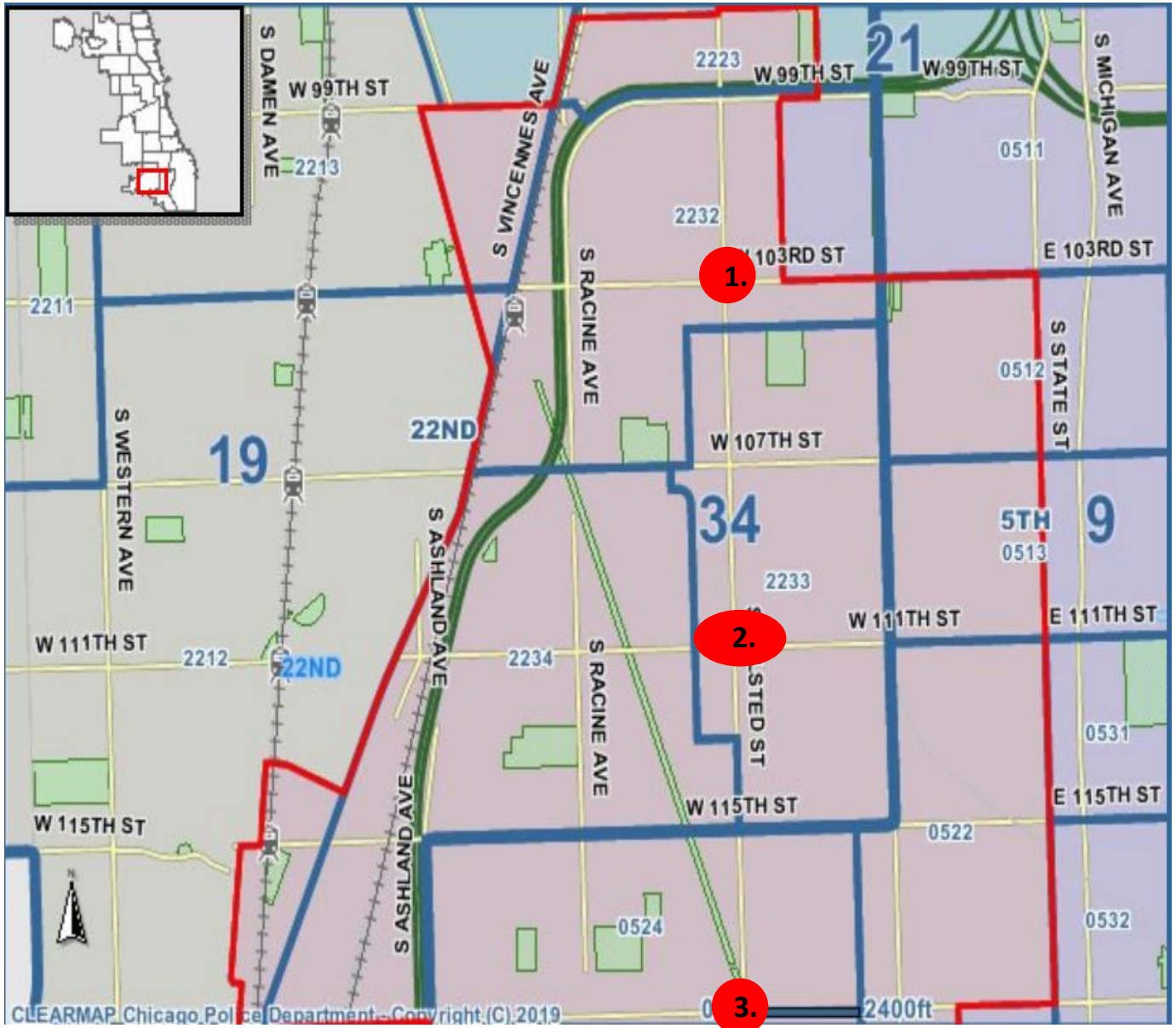


In October, a total of 41 crimes were reported to CPD in the SSA 45 business district, but only 14 crimes occurred during the hours SSA patrol officers were patrolling the streets. There was a 35 percent arrest rate in the crimes that occurred during patrol hours. As we approach the holiday season, we may see less foot traffic in the business district but typically there's an uptick in crimes such as burglary, petty theft and domestic disturbances.

SSA 45 Patrol Officers are aware of this trend as a result of years of experience monitoring the business district and will be proactive and vigilant in curbing nuisance crime in the area.

Hot Spots in SSA 45

Hot Spots = ●



1. 103rd & Halsted (811 W. 103rd St. – Family Dollar)
2. 111th & Halsted to Emerald (White Castle)
3. 119th & Halsted to State St.